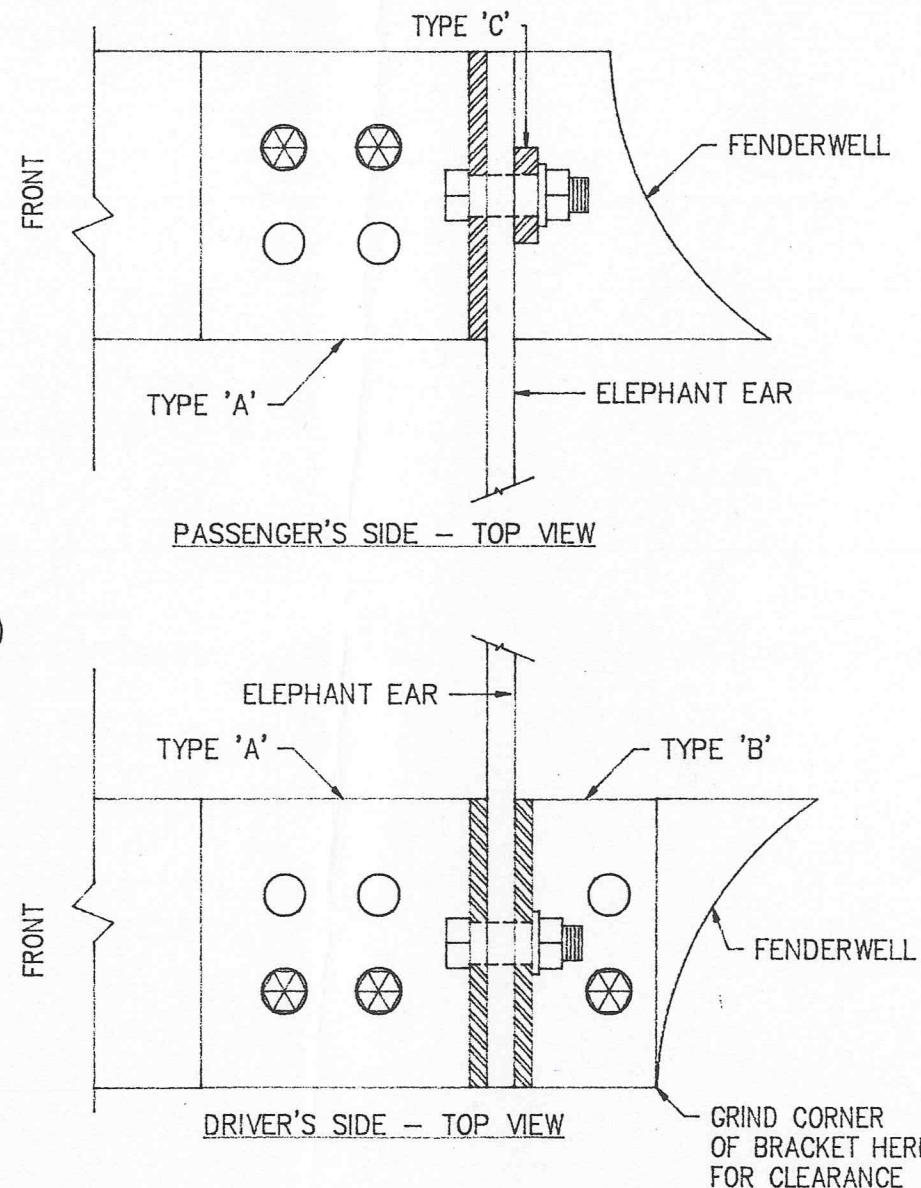


SIDE VIEW - DRIVERS SIDE
TYP. BOTH SIDE EXCEPT
WHERE (*) NOTED

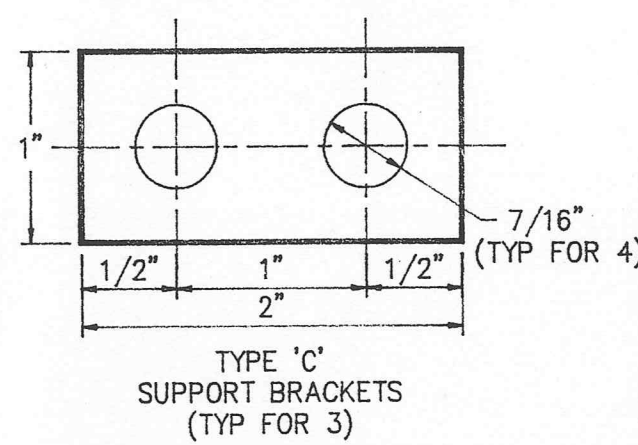
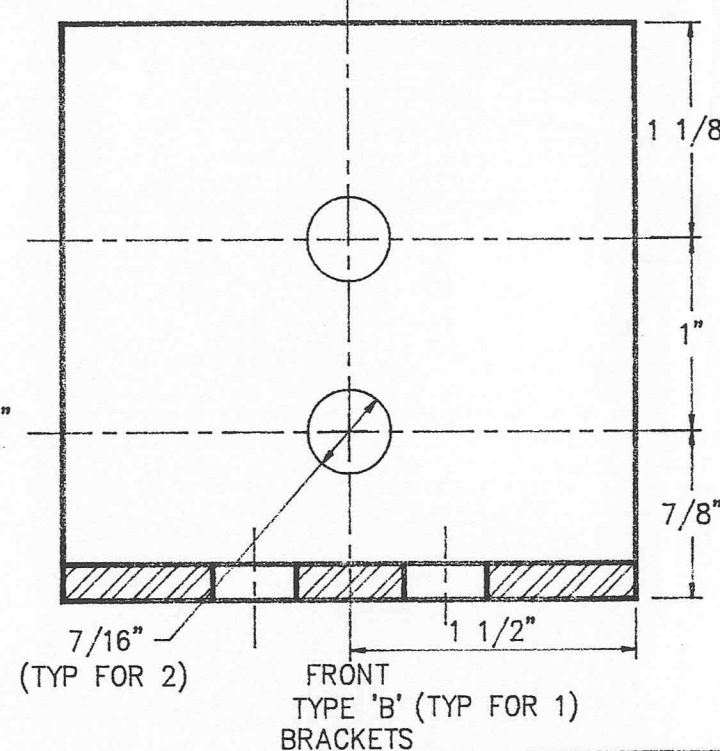
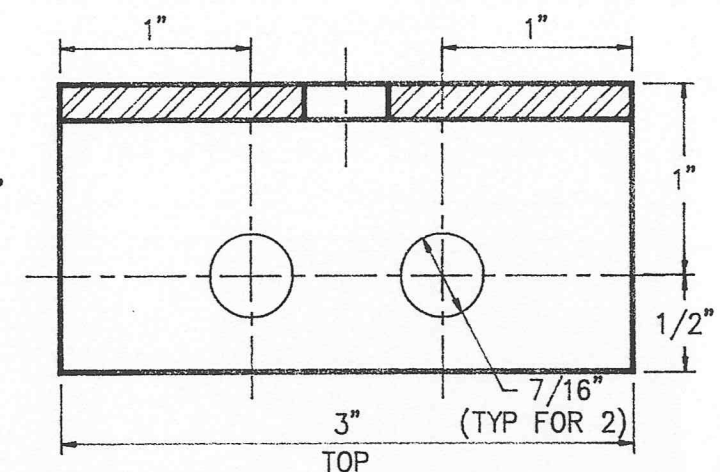
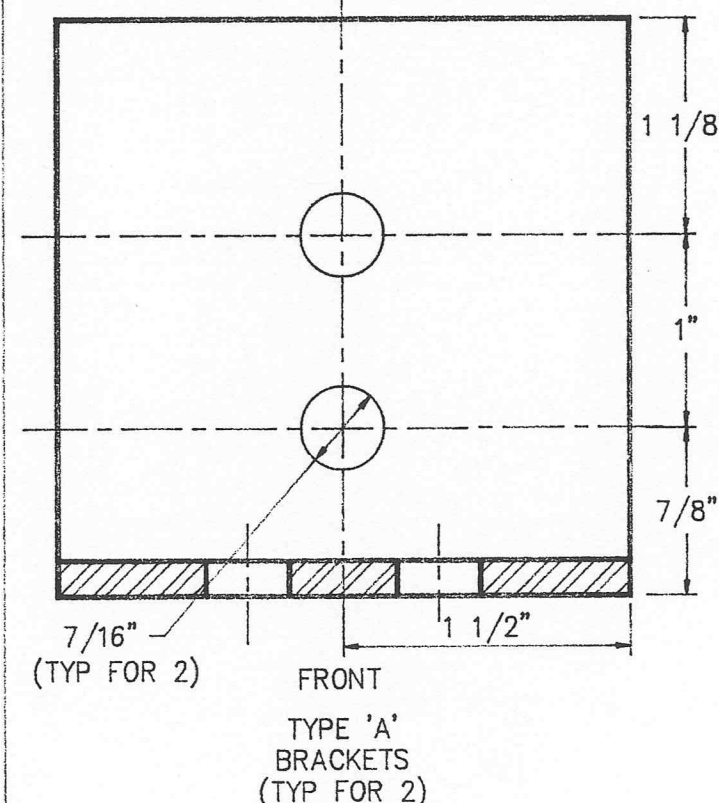
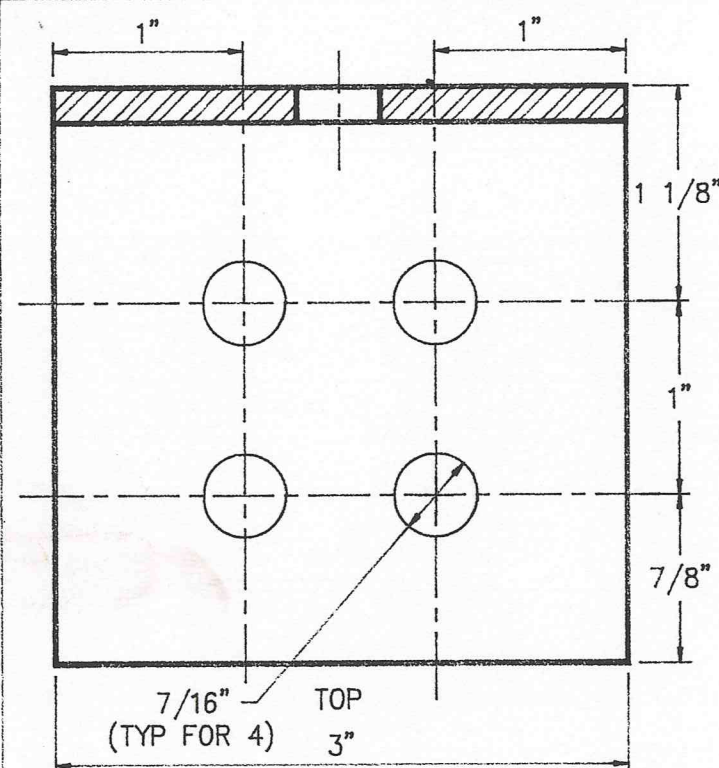
NOTES:

1. CUSTOMER TO 'MOCK-UP' ENGINE W/ EARS IN ENGINE BAY PRIOR TO DRILLING MOUNTING HOLES IN FRAME RAILS & ELEPHANT EARS.
2. CUSTOMER TO DRILL MINIMUM 1 1/4" HOLE IN BOTTOM OF FRAME CHANNEL TO ACCESS MOUNTING BOLTS. USE HOLE SAW & ARBOR. ACCESS HOLE WILL BE CONCEALED BEHIND FACTORY PLASTIC 'SPASH GUARD.'
3. FASTENERS REQUIRED
 5 EACH - 7/16" X 2 1/2" GRADE 8 BOLT
 4 EACH - 7/16" X 1 1/2" GRADE 8 BOLT
 9 EACH - 7/16" LOCKWASHER
 18 EACH - 7/16" FLAT WASHER



STREETWIZE PERFORMANCE

SCALE: NONE	APPROVED BY:	DRAWN BY: T. HELTON
DATE: 11-92	R. MCDOWALL	REVISED:
B-ENGINE A-BODY MOTOR MOUNT BRACKETS		
SHEET 2 OF 2		DRAWING NUMBER B/A-002
		REVISION A



- NOTES:
1. ALL TYPE 'A' & 'B' BRACKETS MADE FROM 3" X 3/16" CARBON STEEL ANGLE STOCK. ALL TYPE 'C' BRACKETS MADE FROM 1" X 1/4" CARBON STEEL FLAT STOCK.
 2. MAKE CERTAIN TO PAINT BRACKETS PRIOR TO INSTALLATION - CARBON STEEL WILL RUST.

STREETWIZE PERFORMANCE

SCALE: 1=1	APPROVED BY:	DRAWN BY: T. HELTON
DATE: 11-92	R. MCDOWALL	REVISED:
B-ENGINE A-BODY MOTOR MOUNT BRACKETS		
SHEET 1 OF 2	DRAWING NUMBER	REVISION
	B/A-001	A